

Sept 2012
– Jan 2013



The University of Leicester's
arts centre – open to all



Performances
Events
Workshops

Box office: 0116 252 2455

Book online at
www.embracearts.co.uk

September					
Sun 16	Charles Owen: Piano masterclass	10.30am	Classical music	FREE	
Mon 17 – Fri 28	Meet the artist: Helene Markham Jones	11am – 4pm	Visual art	FREE	
Thurs 20	East Midlands Visual Artist Network conference	10am – 4pm	Visual art	£10	
Sat 22	renaissance one: Creative Salon	6pm	Spoken word	FREE	
Sat 23	Turned on its head movement session	3pm	Take part	£5	
Fri 28	Bright in the Corner	7.30pm	Celebrate!	£10 / £7	fVr
Sat 29	Artists' Portfolio Day	10am - 5pm	Visual art	£7 / £5	
October					
Mon 1 – Sat 6	Meet the artist: Halima Cassell	11am – 4pm	Visual art	FREE	
Thurs 4 – Sat 6	Knighton Chamber Orchestra	7pm	Local music	£10 (£8 con 4 Oct only)	
Sun 7	Quick Shifts (UK)	6pm	Dance	£6 / £4	
Mon 8	Passion2Print: Storytelling in Music exhibition	opens	Visual art	FREE	
Thurs 11	Fittings Multimedia Arts: Master Juba	7.30pm	Celebrate!	£10 / £8	fVr
Fri 12	Leicester Jazz House: John Etheridge	8pm	Jazz	£8	fVr
Sun 14	Hatch: 12	11am – 11pm	Live art	FREE	
Sat 20	The Big Draw family workshops	10.30am / 1.30pm	Visual art	£1 / £0.50	
Sun 21	Catfoot Theatre: Cowboy Baby	3pm	For children	£7 / £25 for 4	
Thurs 25	Parkin Presents	8pm	Local music	£6 / £4	
Sat 27	Spark Children's Puppet Company	starts	Take part	£30	
Sun 28	Turned on its head movement session	3pm	Take part	£5	
November					
Thurs 1	Oska Bright Film Festival: On the Road	12.45pm / 6pm	Film	£2 (£3 for both)	
Fri 2	Leicester Jazz House: John Law Three Ways Trio	8pm	Jazz	£10	fVr
Sat 3	University of Leicester Sinfonia	7.30pm FNH	Local music	£8 / £6	
Sun 4	Quick Shifts (UK)	6pm	Dance	£6 / £4	
Thurs 8	Grassroutes: Eight Leicestershire Writers	1pm	Spoken word	FREE	
	Music for Pianos and Hands	7.30pm	Local music	£6 / £4	
Sun 18	Krazy Kat Theatre: Baba Yaga	3pm	For children	£7 / £25 for 4	
Thurs 22	Walk the Talk	5.30pm	Visual art	FREE	
Fri 23	Yvonne Bloor and Friends	7.30pm	Local music	£7 / £5 / £14 for 4	
Sun 25	Turned on its head movement session	3pm	Take part	£5	
	An Afternoon with Matthias Sperling	5pm	Dance	£8 / £6	fVr
Fri 30	The Coull Quartet	7.30pm	Classical music	£15 / £12	fVr
December					
Sun 2	Quick Shifts (UK)	6pm	Dance	£6 / £4	
Fri 7	Leicester Jazz House: Kate Williams / Bobby Wellins	8pm	Jazz	£10	fVr
Sat 8 and Sun 9	Everyone can sing	10am – 5pm	Music workshop	£50 / £30	
Weds 12	2nd Wind Concert Band	7.30pm FNH	Local music	£8 / £6 / £5 / 18 for 4	
Fri 14	Catfoot Theatre: Santa Claus Conquers the Martians	7.30pm	Theatre	£10 / £8 / £30 for 4	fVr
Sun 16	Turned on its head movement session	3pm	Take part	£5	
January					
Mon 7	Between the Lines exhibition	opens	Visual art	FREE	
Fri 11	Leicester Jazz House: Jim Hart Cloudmakers Trio	8pm	Jazz	£10	fVr
Fri 18	Galina Vale	8pm	Classical music	£12 / £10	fVr
Sat 19 – Sun 20	Knighton Chamber Orchestra	5pm	Local music	£12 / £10	
Sun 27	Turned on its head movement session	3pm	Take part	£5	

Events take place at Embrace Arts or Fraser Noble Hall (FNH)



Funded and supported by
the University of Leicester



Supported using public funding by
ARTS COUNCIL ENGLAND

Chris Webb



Celebrate!

... the Cultural Olympiad

Double bill discount
Book for both **Bright in the Corner** and **Master Juba** for just **£15 / £10**

Bright in the Corner

Friday 28 September at 7.30pm £10 / £7

An exhilarating new piece fusing the cultural traditions and contemporary forms of South Africa and the East Midlands. This outstanding production is the result of collaboration between 18 dancers, musicians and storytellers from the Black township of Mamelodi, South Africa, and from Derbyshire.

An unmissable mix of high energy and uplifting experience against a backdrop of serious social and economic challenge, Bright in the Corner demonstrates the pride and the joy in international understanding and shared humanity.

Directed by Debi Hedderwick, Paepae Mmekwa, Emma Mmekwa and Kate Rounding with support from Derbyshire County Council and Igniting Ambition.

With financial assistance from Legacy Trust UK, Arts Council England, Derbyshire County Council and National Arts Council of South Africa. Part of the UK Cultural Olympiad celebrations.

www.artsderbyshire.org.uk

Family friendly

1 hour 30 minutes

Student offer:

Tickets just £5 where you see

Exclusive to current holders of the NUS extra card.

Like embraceartsfiverstudents for the latest offers and special discounts

... Black History Season

Celebrate!



Fittings Multimedia Arts in

Family friendly



Master Juba: The Wonder of the World

Thursday 11 October at 7.30pm £10 / £8

Come hear the amazing tale of the man who changed the world, the man who invented tap and became the greatest dancer who ever lived.

A frenzy of beats, a call and a song, improvised tap and the heart of a drum combine in this interactive show from disability-led street performance company Fittings.

Travel from the verdant plains of West Africa, through the bitter slave fields of North America, to the taverns and music halls of the industrial heartlands of Europe – including the East Midlands.

Join master storyteller Stickman Higgins, his faithful sidekick Lucy Long (as portrayed by star-spangled signed song diva Caroline Parker), the queen of improvised rhythm tap Jessica Murray and the internationally-acclaimed songbird Helen McDonald on this miraculous historical journey. www.fittings.org.uk

50 minutes

With fully-integrated sign language throughout



fittings multimedia arts

@fittingsarts

Celebrate! Theatre Dance Visual art

Theatre

Catfoot Theatre presents*

Santa Claus Conquers the Martians

Friday 14 December at 7.30pm
£10 / £8 / party of four £30 

Family friendly



It's Christmas Eve 1964 and KID TV, Minnesota's second biggest cable channel, presents its live studio dramatisation of the hit film 'Santa Claus Conquers the Martians'. Surely, nothing can go wrong – can it? Catfoot, using just four actors to play over 60 characters, brings this cult low-budget film classic – rated one of the worst movies of all time – to the stage.

Funny and fast-moving, this new yuletide retro romp is the ideal family theatre treat this Christmas. Features aliens, robots, more aliens, wobbly sets, even wobblier space rockets and a toaster. You have been warned!

www.catfoot.co.uk

8+ years. 2 hours

 [catfoot theatre company](https://www.facebook.com/catfoottheatrecompany)  [@catfoottheatre](https://twitter.com/catfoottheatre)

Quick Shifts (UK)

£6 / £4, 2 hours



Quick Shifts is a creative programme of exchange days and performances that take a deep look at the nature of dance and improvisation. All are welcome and can take part in the October and November events.

Ideal for all those interested in dance, drama or movement – whether professional, amateur, a student or just wanting to watch and learn. No age restrictions.

Performing artists and hosts include Susanne Martin, Gabriele Reuter, Sally Doughty, Miriam Keye, Eleanor Walker, Marie Fitzpatrick, Jo Breslin and Annie Ball. For details of each session, visit www.dance4.co.uk.

Sunday 7 October at 6pm, Sunday 4 November at 6pm, Sunday 2 December at 6pm

- Part of a development programme to support improvisation in performance in Leicester and the East Midlands, supported by Dance4 and Embrace Arts.

Dance

Pari Naderi, courtesy of Siobhan Davies Dance



Dance4 presents

DANCE4
PRESENTS

An Afternoon with Matthias Sperling

Sunday 25 November at 5pm £8 / £6 

Dance4 associate artist Matthias Sperling returns to Embrace Arts to share the current progress of his most recent work, offering a sneak preview of what's to come and an insight into what's behind it.

Matthias is a choreographer whose work irreverently explores the notions of culture and science in relation to the body, mind and self.

He previously performed at Embrace last year in his duet work Do Not Be Afraid.

1 hour 30 minutes

www.dance4.co.uk

 [dance4](https://www.facebook.com/dance4)  [@dance_4](https://twitter.com/dance_4)

FREE tickets for Quick Shifts (UK) on Sunday 2 December when you book in person or by 'phone for An Afternoon with Matthias Sperling

Theatre Dance

Visual art

(Free entry)

Gallery open
10am – 6pm
Monday to Friday

We are also open some weekends but please visit
www.embracearts.co.uk or call us on
0116 252 2455 weekdays to check beforehand

■ closed 24 December – 1 January 2013

Passion2Print 2012: Storytelling in Music

Monday 8 October –
Friday 7 December

Passion2Print is Leicester Print Workshop's biennial celebration of contemporary fine art printmaking. Exclusively featuring the work of LPW artists, it is a high-quality showcase for printmaking today. Reflecting its partnership with Embrace Arts and Oundle International Festival, the exhibition will explore ideas around storytelling in music.



Peter Clayton



(Free Preview party –
all welcome
Thursday 4 October,
5.30pm – 7.30pm)

The Big Draw family workshops

Saturday 20 October at
10.30am and 1.30pm
£1 adult; 50p child

Led by visual artist Claire Morris
Wright. Both workshops are
limited to 15 people so please
book in advance. 2 hours

Walk the Talk

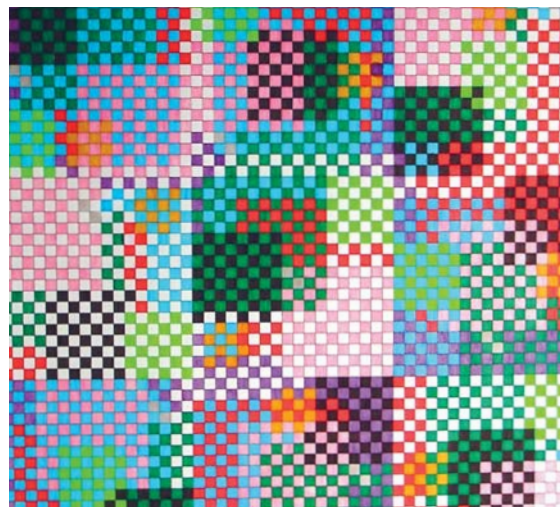
Thursday 22 November
at 5.30pm FREE

Join Passion2Print selector
and LPW artist Peter Clayton
as he talks about the
exhibition and contemporary
fine art printmaking. 1 hour

The Arts Council England interest-free loan
scheme, the easy and affordable way to buy
and collect contemporary art and craft on
sale in exhibitions at Embrace Arts.

Typical 0% APR

Subject to status. Terms and conditions apply. Applicants must be at
least 18 years old. Embrace Arts is a licensed broker of Own Art loans.
Registered address: Embrace Arts, University of Leicester, Richard
Attenborough centre, PO Box 138, Lancaster Road, Leicester LE1 7HA.



Lloyd Hughes

Between the Lines

Monday 7 January to Friday 22 March

Invited artists from across the East Midlands explore the
use of line in this new exhibition of unique drawings,
from the figurative to the abstract.

Features work in a variety of media, from pencil,
charcoal and digital to textiles and drawing in the
sand, by Antonia Eleftheriou, Lloyd Hughes, Mattheiu
Leger, Olivier Leger, Ashok Mistry, Andriana Nikolaidou,
Thomas Robertson, Diana Shepherd and Ken Turnell.

Curated by Embrace Arts as part of the Big Draw's
'2012 in Lines'

■ "To infinity and beyond!" – come and add your own
personal drawing to a unique never-ending work of
art at Embrace Arts. On throughout the exhibition.

(Free Preview party – all welcome
Thursday 10 January, 6pm to 8pm)

A grapple a day

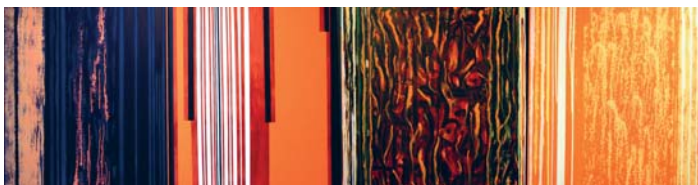
Alongside the Between the Lines exhibition, the
Embrace Arts window installation features animated
drawings of past and present wrestlers.

Artist John Kirby is inspired by photographs
of his sporting heroes to create very individual
interpretations of his subject matter and their
characteristics.

Visual art

Meet the artists

Two opportunities to drop in and meet artists in residence and discuss their work with them



Helene Markham Jones

Monday 17 – Friday 28 September, 11am – 4pm

Helene is an abstract painter whose work explore two strands: the power of geometric form and the fluid response to materials and light. A Synapse Transitions Residency 2012.

Halima Cassell

Monday 1 – Saturday 6 October, 11am – 4pm

Born in 1975 in Pakistan, brought up in Manchester and now living in Blackburn, Halima fuses her Asian cultural roots with a fascination for African patterning and a passion for architectural geometry. By combining definite lines and dramatic angles carved in complex surface patterns with heavily contrasting colours, she creates a sense of compelling drama and playful dynamism.

Artists' Portfolio Day

SYNAPSE

Saturday 29 September, 10am – 5pm £7 / £5

Learn from the experts at this special weekend for artists and makers, organised in collaboration with Synapse Arts. Get comments on your work. Find how to promote yourself to galleries and art organisations. Discover the best sources of funding and much more. Plus individual advice sessions with experienced curators and art administrators from across the region. Booking advisable.

East Midlands Visual Artist Network conference

Thursday 20 September, 10am – 4pm
£10 (concessions available)

EMVAN's third public conference aims to celebrate the region's visual arts and stimulate and empower the visual arts community in this time of austerity. Featuring guest speakers, networking opportunities and Open Space sessions, the event aims to offer something for everyone, whether an individual artist or part of an organisation, collective or project. Book online at www.derbyquad.co.uk



www.ashotinthedark.co.uk

Catfoot Theatre in

Cowboy Baby

Sunday 21 October at 3pm

£7 / party of four £25

It's time for bed in the Wild West. But Cowboy Baby ain't tired. He wants to play with Texas Ted, Denver Dog and Hank the Horse. If only Cowboy Baby can find 'em – before Sheriff Pa finds him first.

Sue Heap's award-winning story has been adapted for the stage as the inaugural production for Catfoot, a new touring company based in rural Nottinghamshire. www.catfoot.co.uk

Come dressed as your favourite Wild West character!

- Stay behind after the show for our special FREE Cowboy Baby drama workshop – suitable for all cowboys and cowgirls and their older ranch-hands.

7 years and under. Performance: 45 minutes; workshop: 25 minutes.

"Perfect ... just right for all young cowboys and cowgirls"

Buxton Fringe Review



catfoot theatre company



@catfoottheatre

Cowboy Baby ©Sue Heap. By kind permission of Walker Books Ltd, London

Krazy Kat Theatre in

Baba Yaga

Sunday 18 November at 3pm

£7 / party of four £25

Baba Yaga is a witch. A witch who is deaf – and with bony legs. She lives in deepest Russia in a house on chicken's legs. When a passing princess needs help, and a local yokel proves less than resourceful, the story tumbles into a riot of colour, magic and middle-European intrigue. Join the popular Krazy Kat in this fast-moving comic re-telling of an ancient tale, featuring puppets, people, storytelling and music.

www.krazykattheatre.co.uk

3 – 7 years. 50 minutes

With fully-integrated sign language throughout



Supported by the National Lottery through Arts Council England



krazy kat theatre company



For children Live art Film

Hatch: 12

Sunday 14 October, 11am – 11pm FREE

Enjoy time-bending performances, dip into compelling art and experience delicious one-to-one encounters in this 12-hour extravaganza.

Hatch, the region's leading performance platform, brings together a host of exciting artists and performers to take over the public and private spaces of Embrace Arts once again.

Drop in whenever you can, stay as long as you like. Come by, get lost, be found and meet us at the bar afterwards.

Some performances may contain nudity, loud noises or strong language and will not be suitable for children. For advice on specific content, please email hatch@hatchnottingham.org.uk.

Supported by the National Lottery through Arts Council England.




■ Hatch: 12 is centred around 'Story Map', an epic attempt by internationally-renowned theatre companies Third Angel and mala voadora to map every country in the world through secret stories.

"The wonderful Hatch" Lyn Gardner, *The Guardian*

hatch. Hatch works with all types of performance, from theatre and live art to dance, comedy, music or anything else. Most artists involved in this event will be chosen through an open call for submissions, so full programme details will not be available until near the date. If you are an artist who is interested in taking part, contact Hatch to find out more details.

www.hatchnottingham.co.uk

 [hatch nottingham](https://www.facebook.com/hatchnottingham)

 [@hatchnottingham](https://twitter.com/hatchnottingham)

Live art Film

Crafts on sale

Your chance to buy beautiful and unique works by some of the region's finest makers. To suit all budgets from less than £10 to £100.



Our latest seasonal selection includes jewellery, ceramics, silk scarves, textiles and cushions. On display in our special crafts case located in the Arts Bar.

Perfect for that special gift – or why not treat yourself?

Embrace Arts is proud to host


Movers

Leicester's Learning Disabled Theatre Company, run by Speakeasy Theatre.

Movers create touring performances here, as well as facilitating drama workshops for learning disabled adults and young people.

To find out more:

t: 0116 283 6646 **e:** info@speakeasytheatre.co.uk
www.speakeasytheatre.co.uk

 [speakeasy theatre company](https://www.facebook.com/speakeasytheatrecompany)

 [@speakeasytc](https://twitter.com/speakeasytc)



'Necessity'



"another excellent programme ... which engaged a wide audience and celebrated the talents of learning disabled artists" Sally Abbott, Regional Director, Arts Council England

 [oska bright](https://www.facebook.com/oskabright)  [@oskabright](https://twitter.com/oskabright)

Carousel presents

Oska Bright Film Festival: On the Road

Thursday 1 November starting from 12.45pm and 6pm

Daytime and evening screening sessions £2 each or £3 for both

The award-winning international Oska Bright Film Festival stops off at Leicester on its English tour with a vibrant selection of 36 short films from all over the world. Showcasing comedy, drama, music, animation and dance, each one offers a glimpse into the culture of the learning disabled film makers who created them.

The daytime screening session features films from Australia and by young people.

The evening includes films in a foreign language and from everywhere (!), finishing with a question and answer session with members of the Oska Bright team – a great opportunity to find out more about this international travelling film festival and how artists with a learning disability have been in control of its development and programme since it began in 2004. Come along and be inspired!

www.oskabright.co.uk
www.oska123.tumblr.com



Anita Sivakumaran

Celebrating Black History Season

Grassroutes: Eight Leicestershire Writers

Thursday 8 November at 1pm FREE

Come and hear Leicestershire writers reading from their work and talking about how it originates in their experiences of our multi-racial city and county. Grassroutes is funded by Arts Council England to promote public knowledge and appreciation of transcultural writing in the city and county.



This free lunchtime event includes the inaugural reading of 'Five Voices Leicester' by Anita Sivakumaran, a Grassroutes commission which appears in the project's exhibition of writing from the county, on show at the City Central Library and the University's David Wilson Library.

All the writers are showcased in the online Grassroutes Writers' Gallery, a series of original creative works edited by Corinne Fowler from the School of English at the University of Leicester.

www.writingindustries.com/grassroutes

17+ years. 1 hour 30 minutes

■ Held to coincide with Literary Leicester, the University of Leicester's popular literature festival, taking place 7 – 10 November 2012.

renaissance one presents

Creative Salon

Saturday 22 September at 6pm
FREE

The emphasis is on creativity, connecting and sharing at this relaxing forum for literature and the spoken word.

Be inspired by short guest presentations, have stimulating conversations, share skills, and enjoy thrilling live readings and performances by talented writers from the East Midlands and beyond.

In true salon style, it's cosmopolitan and everyone – from the intrigued to the actively involved – is welcome.

Places limited so please book in advance.

■ Creative Salon is part of a mentoring project developed by the acclaimed poet Jean 'Binta' Breeze and literature organisation renaissance one to support and develop intermediate level writers in the East Midlands. The project is a collaboration between renaissance one, Embrace Arts, Writing East Midlands and Nottingham Playhouse, and is financially supported by Arts Council England.

www.renaissanceone.co.uk

Free lunchtime Soundbites

Tuesdays, 2 October – 4
December 2012 and 15 – 29
January 2013,
starting at 12.45pm

Enjoy musical entertainment on every scale, from school orchestras to local soloists. All performances last no more than an hour. Food and drink on sale at the Arts Bar.



Chris Redgrave

Roger Coull and Philip Gallaway – violins; Rose Redgrave – viola; Nick Roberts – cello

The Coull Quartet

Friday 30 November at 7.30pm £15 / £12

Haydn: Quartet in G Op 77 No 1; Shostakovich: Quartet No 12 in D flat Op 133; Beethoven Quartet in F Op 135

The Coull Quartet kicks off its new series at Embrace Arts with a concert of late masterpieces by composers whose spirits grew younger, even as they got older. Haydn opens his penultimate quartet with a catchy march, Beethoven mixes deadpan wit with sublime tenderness and, in the year The Beatles released the 'White Album', Dmitri Shostakovich moves off in a startling new direction – yet he's never sounded more devastatingly like himself.

www.coullquartet.com 1 hour 50 minutes

"nothing but praise for a display so full of wisdom and musicality"
The Gramophone

the coull quartet

@coullquartet

The Coull also plays at Embrace Arts on Friday 15 February and 10 May 2013

Season ticket discount
Buy a season ticket for all three concerts for just £36 / £28.80 and save 20%

Galina Vale: La Diva de la Guitarra

Friday 18 January at 8pm £12 / £10

Enjoy a colourful evening of classical, flamenco and folk guitar music from Spain, Latin America, Eastern Europe and beyond. A classically-trained guitar virtuoso, Galina combines a charismatic stage presence and dynamic powerful playing style with an unusually wide-ranging and technically-demanding repertoire.

Born in the Ukraine into a family of musicians, she was a child prodigy who began her performing career when she appeared on state television aged 8. Never afraid of controversy, she has become a unique personality of the international guitar world and she continues to experiment in crossing boundaries and musical styles.

www.galinavale.com

"A breath of fresh air; she is a musical actress" Classical Guitar Magazine

galina vale

@galinavale



Spoken word Classical Jazz Local music



From left: John Etheridge, John Law, Kate Williams and Bobby Wellins

Friday Jazz Leicester Jazz House presents

John Etheridge – solo guitar

Friday 12 October at 8pm £8

Few of John Etheridge's peers handle an electric instrument with such delicacy. It's a measure of his talent that he can take unpretentious, globe-trotting themes and, with his gentle cross-rhythms, give them genuine dignity.

He combines a jazzman's sophistication with a folksy sense of drama and simple, unaffected melodic lines. Ideal company in this intimate venue.

www.johnetheridge.com

"radiates his pleasure in playing music"
John Fordham, The Guardian

Season ticket discount
Buy a season ticket and save 20%

All four Friday Jazz gigs for just £30 – a saving of £8 on the individual ticket prices.

John Law Three Ways Trio

Friday 2 November at 8pm £10

LJH favourite John Law promises a really atmospheric journey, with the sensitivity of classical harmony and some wonderfully hypnotic jazz grooves too.

Julian Arguelles has been described by the Independent as "England's most complete saxophonist for years", and those who heard Yuri Goloubev at Embrace Arts with Gwylim Simcock will surely agree with this accolade: "he unites the qualities of a virtuoso with impeccable technique and timing with the fluent capacity of a great improviser" (Jazzit Italy).

www.nday.co.uk/JohnLaw.html

"One of Europe's most adventurous pianists" Jazzwise



Kate Williams – piano and Bobby Wellins – tenor saxophone

Friday 7 December at 8pm £10

At 70 Bobby Wellins is a jazz survivor with a distinctive sound and improvising style. The pianist and composer Kate Williams, who has now released five CDs to critical acclaim, displays hints of Thelonious Monk and Bill Evans in her playing.

Her subtle harmonies and sudden shifts of mood and texture provide a natural complement to Wellins' unadorned tenor sax tones as they play both standards and originals.

www.kate-williams-quartet.com

"The Scottish tenorist[s] ... reedy, romantic tone and an unrushed, spartan style ... is a perfect match for Williams' sensitive virtuosity"
Time Out

Jim Hart Cloudmakers Trio

Friday 11 January at 8pm £10

A devotion to raw energy, a dedication to groove and rhythm, and strong melody.

This trio of award-winning multi-instrumentalist Jim Hart (vibes), Michael Janisch (bass) and Dave Smith (drums) brings together three of the finest of the younger generation currently on the international jazz scene.

www.jimhart.co.uk

"Outstanding" Financial Times



All gigs 2 hours and 30 minutes. Hot and cold food available, including main dish for £5.50. Licensed bar.

Music workshop

Everyone can sing

Saturday 8 and Sunday 9 December, 10am – 5pm

Tutor: Dan Evans, £50 / £30

Have lots of fun finding your voice – and your confidence – in this enjoyable and highly-participatory weekend. Learn how to listen carefully, breathe effectively and project your voice to make songs come to life. For all levels, from those who have been called "tone deaf" to professional singers of any genre.

Leicester International Music Festival presents

Charles Owen: Piano masterclass

Sunday 16 September at 10.30am

FREE – no booking required

Sponsored by The Alan and Jean Gayton Trust

www.leicesterinternationalmusicfestival.org.uk



Jack Liebeck

Embrace Arts is pleased to support local music on behalf of the University of Leicester.

Our associated group scheme is open to any Leicester-based amateur or semi-professional music group. For more details, please contact arts-centre@le.ac.uk.



Knighton Chamber Orchestra

Conductor: Paul Jenkins

Mozart: The Magic Flute

Thursday 4 – Saturday 6 October at 7pm
£10 (£8 concessions only available for 4 October)

A full modern-dress performance of Mozart's ever-popular The Magic Flute, in the round with full orchestra.

www.knightonchamberorchestra.co.uk

3 hours

Parkin Presents

Thursday 25 October at 8pm
£6 / £4

Cherry-picked piano pop in a charming atmosphere that will make you see the stars of the Midlands music scene in a whole new (candle) light. Outside of the noisy pubs, this is a chance to get up close and delicate with your favourite songsmiths.

2 hours 45 minutes

Music scholarships

The University is committed to ensuring that talented musical students can continue with their lessons while undertaking a degree. Managed by Embrace Arts, it offers a number of scholarships each year open to all students new to the University. Benefits include lessons from members of the Philharmonia Orchestra or local professional teachers and travel costs. Auditions take place annually (October for 2012 – 2013).

For more details contact:
arts-centre@le.ac.uk.

Student music

The Music Association is run by a committee of representatives from all five student music societies. It is responsible for promoting music awareness on campus and in the community. Membership is open to all University of Leicester students and is free. Contact su-musicassociation@le.ac.uk for more details or:

Big Band

su-bigband@le.ac.uk

Chorus

su-choir@le.ac.uk

Orchestral Society

su-orchsoc@le.ac.uk

Chamber Choir

su-luchamberchoir@le.ac.uk

Concert Band

su-concertband@le.ac.uk

The student music societies hold concerts throughout the year, including:

- Chamber Choir, Saturday 10 November at St James the Greater Church
- Orchestral Society, 1 and 2 December, and 16 and 17 March 2013

For details, please contact the Embrace Arts box office.

University of Leicester Sinfonia

Conductor: Michael Sackin
Leader: Elizabeth Murphy
with Robert Jones (cello)

Saturday 3 November
Fraser Noble Hall at 7.30pm £8 / £6

ULS is delighted to host the young and gifted Northampton-based cellist Robert Jones in Elgar's deeply felt autumnal Cello Concerto in E minor Op 85. Dvořák's Slavonic Dance in E minor, Op 72 No 2, provides a beautiful lead into it, and it's nice not quite to leave Elgar by following it with his Salut d'Amour. The evening concludes with Mendelssohn's 'Scottish' Symphony, No 3 in A minor, a work of abiding beauty and interest.

1 hour 55 minutes

Music for Pianos and Hands

Thursday 8 November at 7.30pm
£6 / £4

Various numbers of piano played in different combinations of hands by Barry Collett, Marguerite Beatson, Anne McCrae and Elizabeth Murphy in works by Smetana, Gurliitt, Brahms, Rachmaninoff, Thiman and Grainger. With instrumental items for flute and clarinet played by the popular Tea for Three (David Calow, Robert Calow and Marguerite Beatson).

1 hour 45 minutes



These events are produced and managed by the performers and hosted by the University of Leicester. Performances are at Embrace Arts unless otherwise stated.

Yvonne Bloor and Friends

Friday 23 November at 7.30pm
£7 / £5 / family of four £14

An evening of classical guitar music given by Yvonne Bloor and students and friends of Embrace Arts.

www.yvonnebloor.com

2 hours

2nd Wind Concert Band

Conductor: Brian Humpherson MBE

The Spirit of Christmas

Wednesday 12 December
Fraser Noble Hall at 7.30pm
£8 / £6 / £5 / family of four £18

Feel the spirit of Christmas in this seasonal programme of carols and popular music. Let the occasion mark the beginning of your own yuletide festivities for the whole family. With audience participation and mince pies!

2 hours 30 minutes

Knighton Chamber Orchestra

Conductor: Paul Jenkins

Saturday 19 and Sunday 20 January
at 5pm (film) and 7.30pm (concert)

Film £4

Concert £8 / £6

or £12 / £10 for both

See the wonderful film, The Concert, about the Tchaikovsky violin concerto (subtitled in English from Russian and French). Then hear in close proximity Tamsin Whaley-Cohen perform the same work with the KCO, along with Mozart's The Marriage of Figaro and his Symphony No 40.

www.knightonchamberorchestra.co.uk

2 hours (film) and

2 hours (concert)

Take part

Get involved in our exciting new programme of learning activities for children, young people and families.

For more information, contact Marianne Pape, Take Part @ Embrace Arts, on (0116) 252 2455 or email mp422@le.ac.uk.

Sundays, 3pm – 5pm

£5 per child per session
Accompanying adults free

Have fun sliding, rolling, stretching, curling and more inside a specially-created multi-sensory environment in these creative movement sessions for young people with disabilities aged 4 – 16 years and their families / carers.

Led by Liz Clark and Oksana Tyminska and tailored to meet individual needs.

Taking place 23 September, 28 October, 25 November, 16 December, 27 January 2013 and 24 February.



Spark Children's Puppet Company



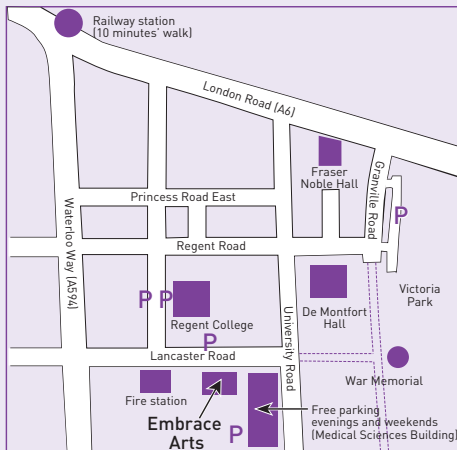
Saturdays, 9.30am – 11.30am

27 October – 1 December,
£30 for 6 sessions

Help create a children's puppet company for Spark, working with expert puppeteers to learn new skills and make your own puppets. These integrated sessions are for 8 – 12 year olds and are open to children of all abilities. No previous experience required.

As places are limited, you must book in advance for these sessions through our box office please.

How to find us



Buses: Numbers 47, 80 / 80a (termtime only), 302.

Embrace Arts
Richard Attenborough centre
Lancaster Road, Leicester LE1 7HA

t: 0116 252 2455

e: arts-centre@le.ac.uk

www: www.embracearts.co.uk

RNID Typetalk service:
18001 0116 252 2455



How to book

Buy your tickets in advance and avoid the queues – we do not charge a booking fee, however you book:



Go online available 24 hours a day at www.embracearts.co.uk.



Call us to pay by debit or credit card on (0116) 252 2455.



Pop in to see us and buy over the counter.



Post details of the tickets you would like, a cheque for the total made payable to 'University of Leicester' and a SAE to Box Office, Embrace Arts, Richard Attenborough centre, PO Box 138, Lancaster Road, Leicester LE1 7HA.

If we post your tickets to you, whether ordered online, by phone or by post, we charge £1 postage and packing.



Box office open 9.15am – 6pm, Mondays – Fridays and one hour before all performances (closed Bank Holidays, and 24 – 28 and 31 December 2012).



Tickets also available from:
The Point, University of Leicester Students' Union, Percy Gee Building (9am – 5pm, Monday – Friday, term time). T: (0116) 223 1181
Tourist Information Centre, 7/9 Every Street, Town Hall Square, Leicester. T: (0116) 299 4444 (credit card bookings accepted) and at www.goleicestershire.com.

Concession prices: Apply to over 60s (for performances and events only), under 19s, members of National Union of Students (NUS), ES40 holders, and those in receipt of incapacity allowance, severe disablement allowance, disability living allowance, and disability working allowance, unless otherwise stated. Proof of concession may be asked for. Some events give an additional reduction for NUS members and those under 19. Disabled patrons requiring

@embracearts

embrace arts

particular assistance are entitled to a free ticket to bring a personal assistant. A discount may be available for parties of 10 or more. Please ask when booking.

Access: Embrace Arts and Fraser Noble Hall are fully accessible to disabled people and have induction loop systems and wheelchair accessible toilets. There are four car parking spaces for blue badge holders at Embrace Arts and two at Fraser Noble Hall.

Ticket types: Seating is unreserved unless otherwise stated.

The Arts Bar: The Arts Bar is our licensed café bar. Run by the University of Leicester, it is open from 10am to 9pm Mondays to Fridays and at weekends when there are performances and classes.

Sorry, we only give refunds if a performance, event or workshop listed in this guide is cancelled.

Every effort has been made to ensure all information is correct at the time of printing. However, we reserve the right to make amendments as necessary. Wherever possible, our performance details include guidance on age suitability and approximate duration (including interval unless otherwise stated). As this information is provided by the promoters / performers, we regret we cannot guarantee its accuracy.

Events marked * are produced and managed by the performers and / or their agents and hosted by the University of Leicester.

Embrace Arts gift vouchers

can be used to buy tickets for our wide range of performances and events, redeemed against the cost of our courses and workshops, and for the purchase of artwork and crafts (conditions apply).

Available for any value from £5 from the box office. Call in or contact us on (0116) 252 2455.